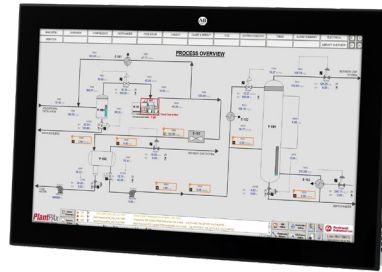


ASEM 6300M Industrial Monitors

Features and Benefits

- Provides up to full high definition (FHD) resolution with a 16 million color LED backlight display in different sizes and aspect ratios from 10.1" to 24"
- DVI and DisplayPort inputs are available on all monitors
- Panel mount variations in standard and wide screen formats
- Resolutions include FHD / SXGA / XGA / WXGA
- Analog resistive or projected capacitive display (for multi-touch operation)
- Available with Standard and Low Profile bezels
- IP65 / IP66K / IP69K (model dependent)
- Includes 3 x USB 2.0, rear plus 1 x USB 2.0 (Type-A, front) on Standard Aluminum and Aluminum True Flat bezels
- Operating temperature: 0 to 50C
- 24V DC isolated or 100-230V AC power
- Features standard units in resolutions up to full high definition displays with the following bezel variants:
 - Aluminum
 - Aluminum True Flat
 - Stainless Steel True Flat
- Low Profile units feature full, high definition widescreen displays for a modern look with the following bezel variants:
 - Low profile Aluminum
 - Aluminum Glass True Flat
 - Hygienic Stainless Steel
- CE, cULus Listed, RCM



Low Profile Bezel



Standard Bezel



Stainless Steel Bezel



Food Grade Gasket

The Allen-Bradley® ASEM™ 6300 is a complete portfolio of open architecture industrial PCs, thin clients and monitors. This broad and adaptable line offers the flexibility you need to meet your specific performance requirements. This product family is a solid match for customers that need a high-performance Human Machine Interface (HMI) solution for industrial environments. By integrating completely with our FactoryTalk® View SE and FactoryTalk View ME software, it allows for seamless assimilation within your facility.





The ASEM 6300M industrial monitor includes a ten-point multitouch screen that can also be operated with gloves. The touch screens are precalibrated so that recalibration is not necessary. These monitors are optimized to work with the ASEM 6300 computer and thin client portfolio to create a visualization, maintenance, control or information computing solution.

Design considerations are becoming more important in the machine-builder world. Low Profile bezels on wide screen displays and monitors provide that ultra-modern look to visually set this equipment apart from the crowd.

Additionally, ASEM 6300M has various design options available making this robust product family a great choice for plant floor environments.

ASEM 6300M Industrial Monitors

	Standard Bezel Aluminum	Standard Bezel Stainless Steel True Flat	Low Profile Aluminum	Low Profile Aluminum Glass True Flat	Aluminum Bezel True Flat	Widescreen Bezel Stainless Steel
LCD backlight TFT LCD	8.4" - 800x600		10.1" W - 1280x800	10.1" W - 1280x800	8.4" - 800x600	
	10.4" - 800x600	12.1" - 1024x768	12.1" W - 1280x800	12.1" W - 1280x800	10.4" - 800x600	12.1" W - 1280x800
	12.1" - 1024x768	15" - 1024x768	15.6" W - 1920x1080	15.6" W - 1920x1080	12.1" - 1024x768	15.5" W - 1920x1080
	15" - 1024x768	17" - 1280x1024	18.5" W - 1920x1080	18.5" W - 1366x768	15" - 1024x768	18.5" W - 1920x1080
	17" - 1280x1024	19" - 1280x1024	21.5" W - 1920x1080	18.5" W - 1920x1080	17" - 1280x1040	24" W - 1920x1080
	19" - 1280x1024		24" W - 1920x1080	21.5" W - 1920x1080	19" - 1280x1040	
			24" W - 1920x1080	24" W - 1920x1080		
Touch screen	Resistive 5 wires			P-CAP Multitouch, (ten-point)	Resistive 5 wires	
T/S controller	USB					
Front panel	Aluminum	Stainless Steel True Flat	Aluminum	Aluminum Glass True Flat	Aluminum	Stainless Steel
Protection grade	IP65	IP66K	IP65			IP69K
Video input	DVI / DisplayPort					
USB	3 x USB 2.0 1 x USB 2.0 (Type-A, front)	3 x USB 2.0	3 x USB 2.0, rear		3 x USB 2.0 1 x USB 2.0 (Type-A, front)	3 x USB 2.0, rear
Power	24V DC Isolated 100V / 230V AC					
Operating temperature	0°C to 50°C					
Approvals	CE (EN 61326-1, EN 61010-1, EN 61010-2-201), cULus LISTED (UL61010), RCM For DC powered models only: UL Class 1 Div 2 Hazardous Location Certification					

Connect with us.    

rockwellautomation.com — expanding human possibility®

AMERICAS: Rockwell Automation, 1201 South Second Street, Milwaukee, WI 53204-2496 USA, Tel: (1) 414.382.2000, Fax: (1) 414.382.4444
 EUROPE/MIDDLE EAST/AFRICA: Rockwell Automation NV, Pegasus Park, De Kleetlaan 12a, 1831 Diegem, Belgium, Tel: (32) 2 663 0600, Fax: (32) 2 663 0640
 ASIA PACIFIC: Rockwell Automation, Level 14, Core F, Cyberport 3, 100 Cyberport Road, Hong Kong, Tel: (852) 2887 4788, Fax: (852) 2508 1846

Allen-Bradley, ASEM, expanding human possibility, FactoryTalk and Rockwell Automation are trademarks of Rockwell Automation, Inc.
 Trademarks not belonging to Rockwell Automation are property of their respective companies.

Publication 6300M-PP001D-EN-P - December 2021 | Supersedes Publication 6300M-PP001C-EN-P - November 2020

Copyright © 2021 Rockwell Automation, Inc. All Rights Reserved. Printed in USA.